

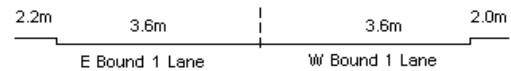
YEAR 2023

COVERAGE (B) STATION 2204

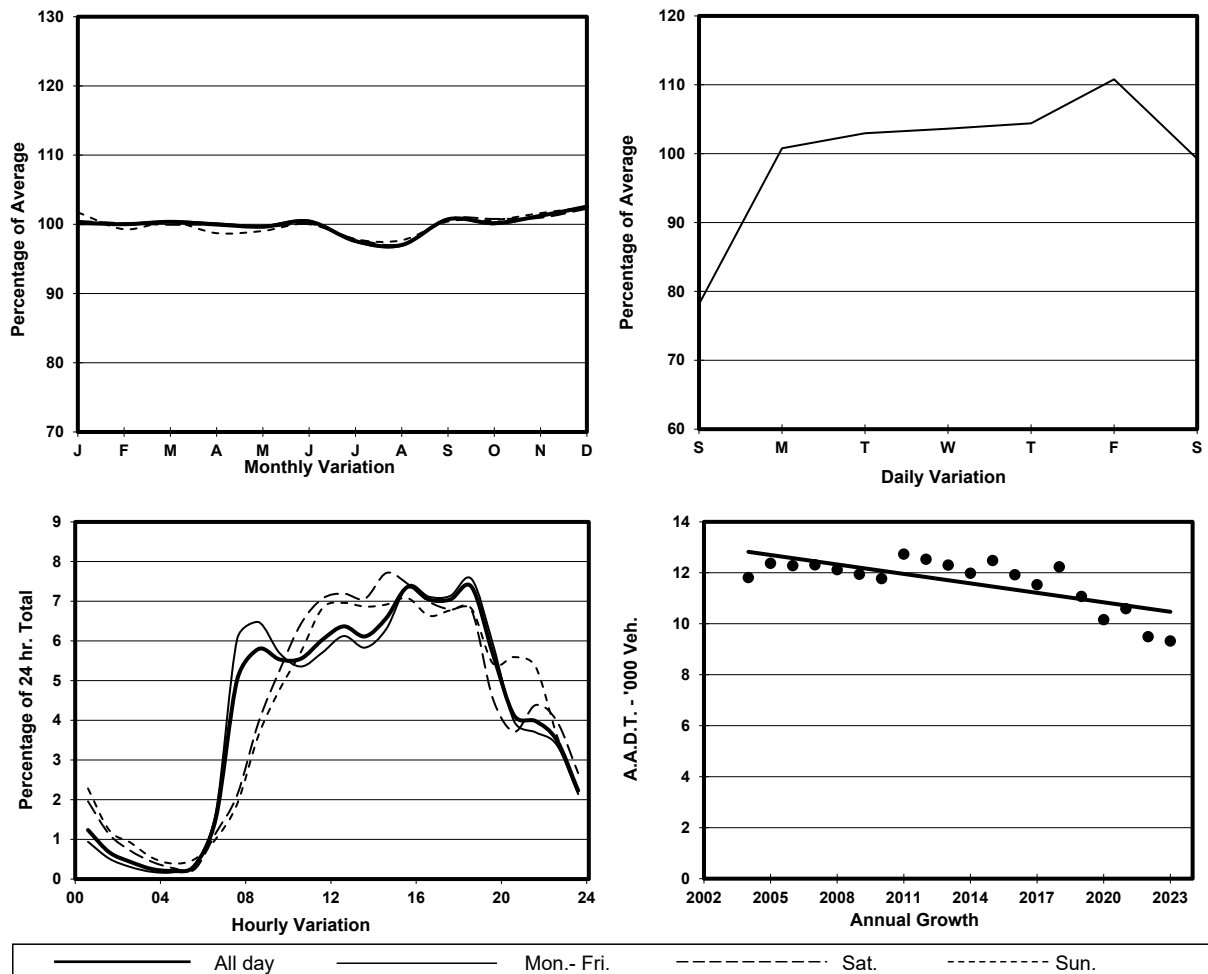
ROAD NETWORK MAJOR

ROAD TYPE DISTRICT DISTRIBUTOR

LINK YEE KING RD & LAI TAK TSUEN RD (from CLOUD VIEW RD to TAI HANG RD)



1. TRAFFIC FLOW VARIATION AND GROWTH



2. TRAFFIC CHARACTERISTICS (BY DIRECTION)

Parameter	All - Day	Mon. - Fri.	Sat.	Sun.
EAST BOUND				
A.A.D.T.	5860	6180	5900	4760
R 12 / 24 - %	74.9	75.9	73.5	69.9
R 16 / 24 - %	93.2	93.9	91.2	91.1
AM Peak Hour	0800-0900	0800-0900	0900-1000	0900-1000
One-way flow at AM peak hour	350	410	310	240
T - % (AM)	-	14.9	-	-
PM Peak Hour	1600-1700	1800-1900	1600-1700	1600-1700
One-way flow at PM peak hour	420	460	410	310
T - % (PM)	-	3.3	-	-
Prop.of commercial vehicles - 16 hr.	-	6.4	-	-
WEST BOUND				
A.A.D.T.	3460	3680	3510	2620
R 12 / 24 - %	77.3	78.1	77	72.8
R 16 / 24 - %	92.9	93.4	91.8	90.6
AM Peak Hour	0800-0900	0700-0800	0900-1000	0900-1000
One-way flow at AM peak hour	200	250	190	120
T - % (AM)	-	15.9	-	-
PM Peak Hour	1800-1900	1800-1900	1700-1800	1800-1900
One-way flow at PM peak hour	270	290	250	210
T - % (PM)	-	7.3	-	-
Prop.of commercial vehicles - 16 hr.	-	9	-	-

3. OTHER INFORMATION AND COMMENT

4. Vehicle classification and occupancy - Monday to Friday

Time		Class of vehicle									
		Motor Cycle	Private Car	Taxi	Private LB	PLB	Goods veh.		Non Fr. Bus	Fr. Bus	
							Light	M & H		SD	DD
0700-0800	Pro	0.0	43.3	19.2	7.2	8.0	4.0	1.6	11.2	0.0	5.4
	Ocp	0.0	1.5	2.0	5.0	8.8	1.6	1.0	11.3	0.0	15.7
0800-0900	Pro	0.7	62.1	11.2	2.8	6.3	6.3	0.0	6.3	0.0	4.4
	Ocp	1.0	1.2	2.0	4.8	13.6	1.9	0.0	8.4	0.0	10.8
0900-1000	Pro	1.9	69.4	11.9	1.3	5.0	6.3	0.0	0.6	0.0	3.8
	Ocp	1.0	1.4	1.7	1.5	10.9	1.3	0.0	1.0	0.0	13.1
1000-1100	Pro	3.6	47.1	18.7	0.0	7.1	14.2	0.9	3.6	0.0	4.9
	Ocp	1.0	1.2	2.1	0.0	8.9	1.3	1.0	1.5	0.0	8.9
1100-1200	Pro	2.8	46.7	24.3	0.9	9.3	10.3	0.0	0.9	0.0	4.7
	Ocp	1.0	1.6	1.6	1.0	6.8	1.2	0.0	2.0	0.0	9.9
1200-1300	Pro	2.2	57.0	18.1	2.2	4.3	10.1	0.0	2.2	0.0	4.0
	Ocp	1.0	1.2	1.6	4.0	14.7	1.2	0.0	1.3	0.0	15.3
1300-1400	Pro	3.4	45.4	20.6	1.7	6.9	12.0	0.9	4.3	0.0	4.9
	Ocp	1.0	1.2	1.6	2.0	9.5	1.6	1.0	1.4	0.0	10.9
1400-1500	Pro	2.6	52.9	16.5	2.0	3.3	13.9	0.0	4.6	0.0	4.1
	Ocp	1.0	1.3	1.8	1.3	12.6	1.2	0.0	2.3	0.0	15.4
1500-1600	Pro	4.6	52.5	13.2	9.7	3.1	7.1	0.0	7.1	0.0	2.7
	Ocp	1.1	1.4	1.8	10.8	15.5	1.6	0.0	11.1	0.0	17.7
1600-1700	Pro	1.1	50.1	25.1	5.0	2.8	8.4	0.0	4.5	0.0	3.1
	Ocp	1.0	1.4	2.0	3.6	15.0	1.2	0.0	9.8	0.0	30.7
1700-1800	Pro	5.6	56.8	25.1	1.7	2.8	4.5	0.0	0.6	0.0	3.1
	Ocp	1.0	1.3	1.8	4.3	16.4	1.3	0.0	9.0	0.0	20.7
1800-1900 Peak hour	Pro	3.6	58.8	26.9	0.0	2.9	2.9	0.0	0.7	0.0	4.2
	Ocp	1.0	1.3	1.9	0.0	15.0	1.3	0.0	1.0	0.0	23.3
1900-2000	Pro	4.0	55.6	30.6	0.0	2.8	3.4	0.0	0.6	0.0	3.0
	Ocp	1.0	1.4	1.9	0.0	16.4	1.3	0.0	1.0	0.0	13.3
2000-2100	Pro	4.0	51.7	35.8	0.0	4.0	0.0	0.0	0.0	0.0	4.5
	Ocp	1.0	1.3	2.0	0.0	11.5	0.0	0.0	0.0	0.0	7.9
2100-2200	Pro	3.2	45.3	38.8	0.0	4.3	2.2	1.1	0.0	0.0	5.1
	Ocp	1.0	1.4	1.8	0.0	8.8	1.0	1.0	0.0	0.0	4.4
2200-2300	Pro	0.0	53.9	33.4	0.0	7.5	0.0	0.0	0.0	0.0	5.1
	Ocp	0.0	1.3	2.0	0.0	10.6	0.0	0.0	0.0	0.0	5.6
16 hours	Pro	2.8	53.7	22.2	2.5	4.7	6.7	0.2	3.1	0.0	4.0
	Ocp	1.0	1.3	1.9	6.2	11.6	1.3	1.0	7.5	0.0	14.2

Legend: Pro. Proportion of vehicles in % (Sum may not add up to 100% due to figure rounding)*

Ocp. Average occupancy of vehicles including both driver and passengers*

M&H Medium and Heavy

* All traffic data are collected from combined bounds